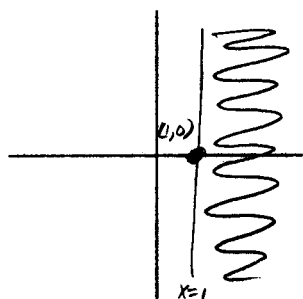
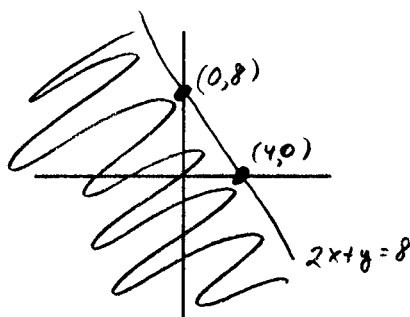


P-16 Sketch ALL the points in the Cartesian plane that satisfy each inequality or set of inequalities. Be sure to follow the method used in the example problem.

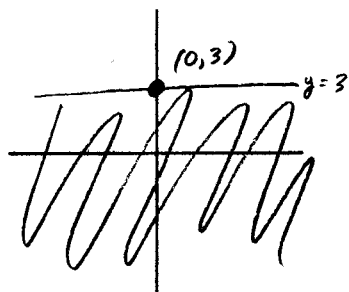
1. $x \geq 1$



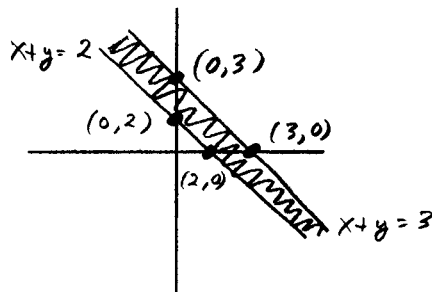
6. $2x + y \leq 8$



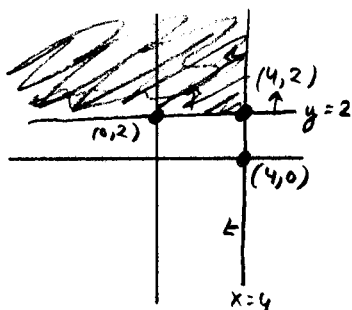
2. $y \leq 3$



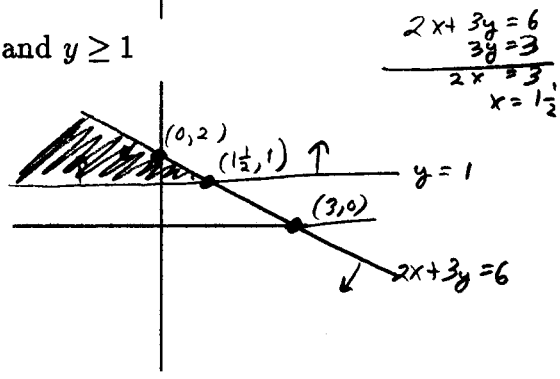
7. $x + y \geq 2$ and $x + y \leq 3$



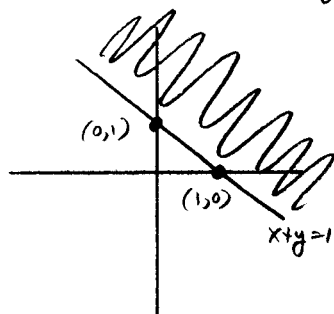
3. $x \leq 4$ and $y \geq 2$



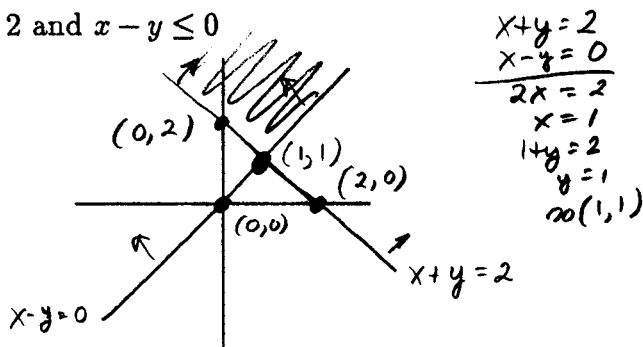
8. $2x + 3y \leq 6$ and $y \geq 1$



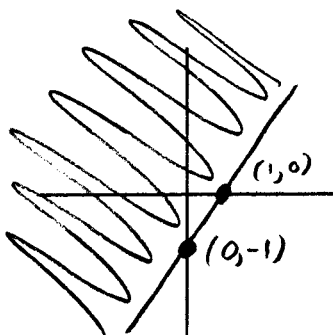
4. $x + y \geq 1$



9. $x + y \geq 2$ and $x - y \leq 0$



5. $x - y \leq 1$



10. $2x - y \geq 6$ and $x + 2y \leq 8$

